

Heaven and Earth Designs

Barn Owls

(Large Format)

Chart No: HAEKAP 293

Chart Design by Michele Sayetta

Artwork by Kate Powell



Finished Design Size 439 W by 246 H (17-1/2 W X 9-3/4 H inches on 25ct)

(This Chart Contains 15 Colors)

(This Chart does NOT have a Grey Stitched Background)

Heaven and Earth Designs LLC

89198 Easy Way Road

Seaside Oregon 97138

320-214-7998

www.heavenandearthdesigns.com

Copyright Heaven and Earth Designs 2014

Copyright Kate Powell 2014

Congratulations on buying a **Heaven and Earth Designs LLC** Cross Stitch Chart .
We know it will bring you many hours of pleasurable stitching and believe the final result will be something to love and admire forever.

Included with your chart is a clear plastic bag to protect your chart, and a coded thread list for the threads you will need to complete your project. Our charts are designed to use DMC stranded cotton threads and, where appropriate, Kreinik metallic thread.

Chart Instructions:

1. This chart is made up of several numbered pages beginning at the top left corner of the first page. The pages of chart are laid out from left to right in rows e.g. 1 2 3 4, 5 6 7 8. Although each chart is marked with arrows which indicate the centre , we believe you will find it easier to begin from the top left corner of page 1 and follow the chart page by page to the bottom right corner of the last page.
2. We recommend you stitch your design on either 18 count Aida or 25 count Linen. using 2 strands of cotton over one in each case.
3. At the top of the thread list you will find our recommendation for the fabric colour. We recommend purchasing a piece of fabric that equates to the design size plus 3 inches [75mm] all around, to allow for framing and matting.
4. Because of the large number of stitches, we have found it to be easier if you stitch one 10X10 grid at a time and then continue on to the next 10 x 10 grid.
5. Stitch each page until it is completed and then move on to the next. On each page there is a number at the top left that indicates the page number. On each corner is a number in parenthesis that indicates the connecting page, unless there is not one.
6. Under International Copyright Laws, you may copy the chart for your own use. We recommend that you use a copy as your working document. You may also wish to enlarge the pages to make the symbols easier to read.

If you have any questions regarding this chart please feel free to contact us.

Heaven and Earth Designs LLC
















320-214-7998

<http://www.heavenandearthdesigns.com>

<https://www.facebook.com/KatePowellArt>

Pattern Name: Barn Owls-Powell
Designed By: Michele Sayetta
Company: Heaven and Earth Designs Inc.
Copyright: 2014 Kate Powell®
Fabric: Linen 25, White
 439w X 246h Stitches
Size: 25 Count, 17-1/2w X 9-3/4h in

Floss Used for Full Stitches:

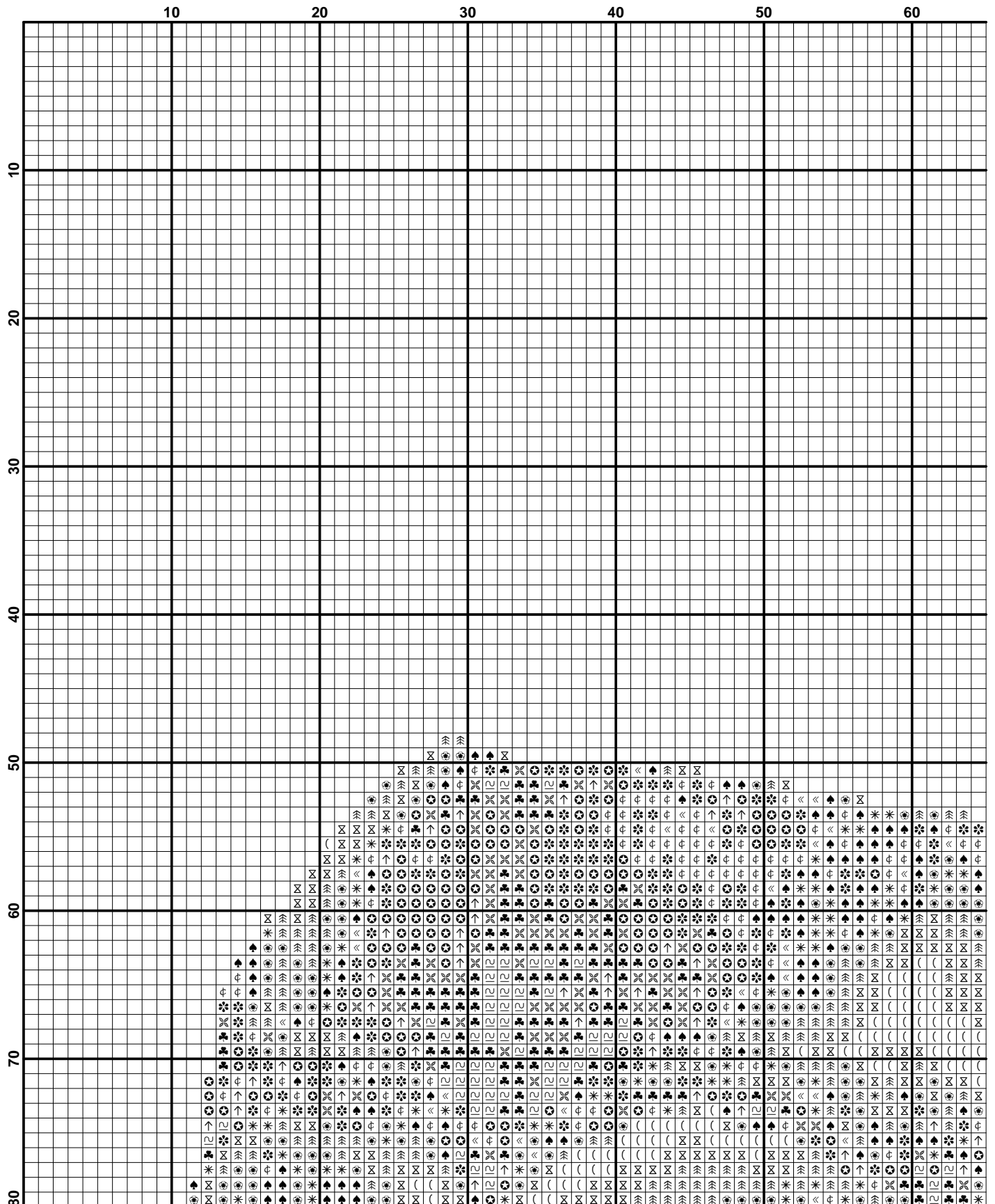
Symbol	Strands	Type	Number	Color
	2	DMC	169	Pewter-LT
	2	DMC	310	Black
	2	DMC	317	Pewter Gray
	2	DMC	318	Steel Gray-LT
	2	DMC	413	Pewter Gray-DK
	2	DMC	414	Steel Gray-DK
	2	DMC	415	Pearl Gray
	2	DMC	535	Ash Gray-VYLT
	2	DMC	647	Beaver Gray-MD
	2	DMC	648	Beaver Gray-LT
	2	DMC	762	Pearl Gray-VYLT
	2	DMC	3072	Beaver Gray-VYLT
	2	DMC	3799	Pewter Gray-VYDK
	2	DMC	3865	Winter White
	2	DMC	B5200	Snow White

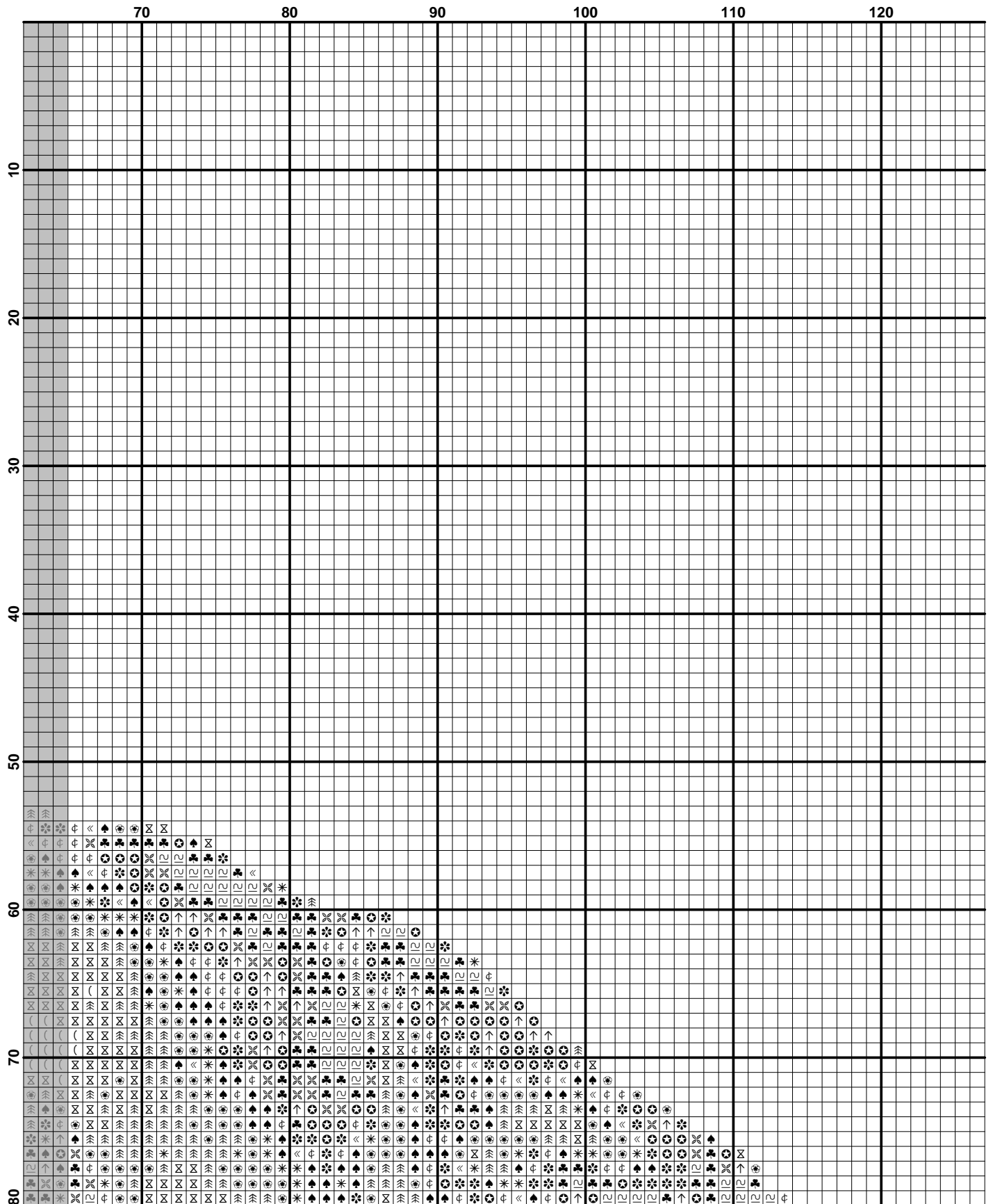
Usage Summary

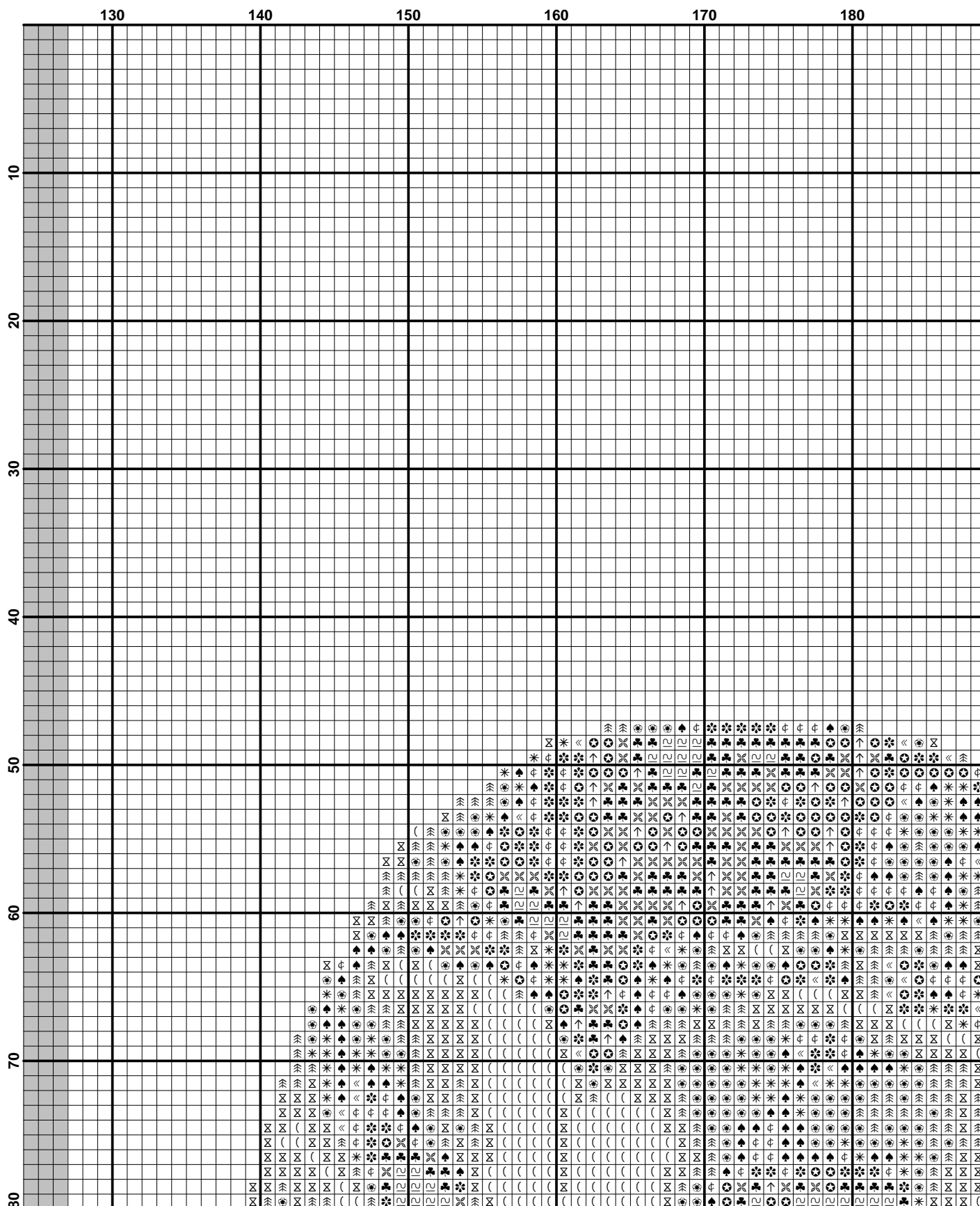
Strands Per Skein: 6

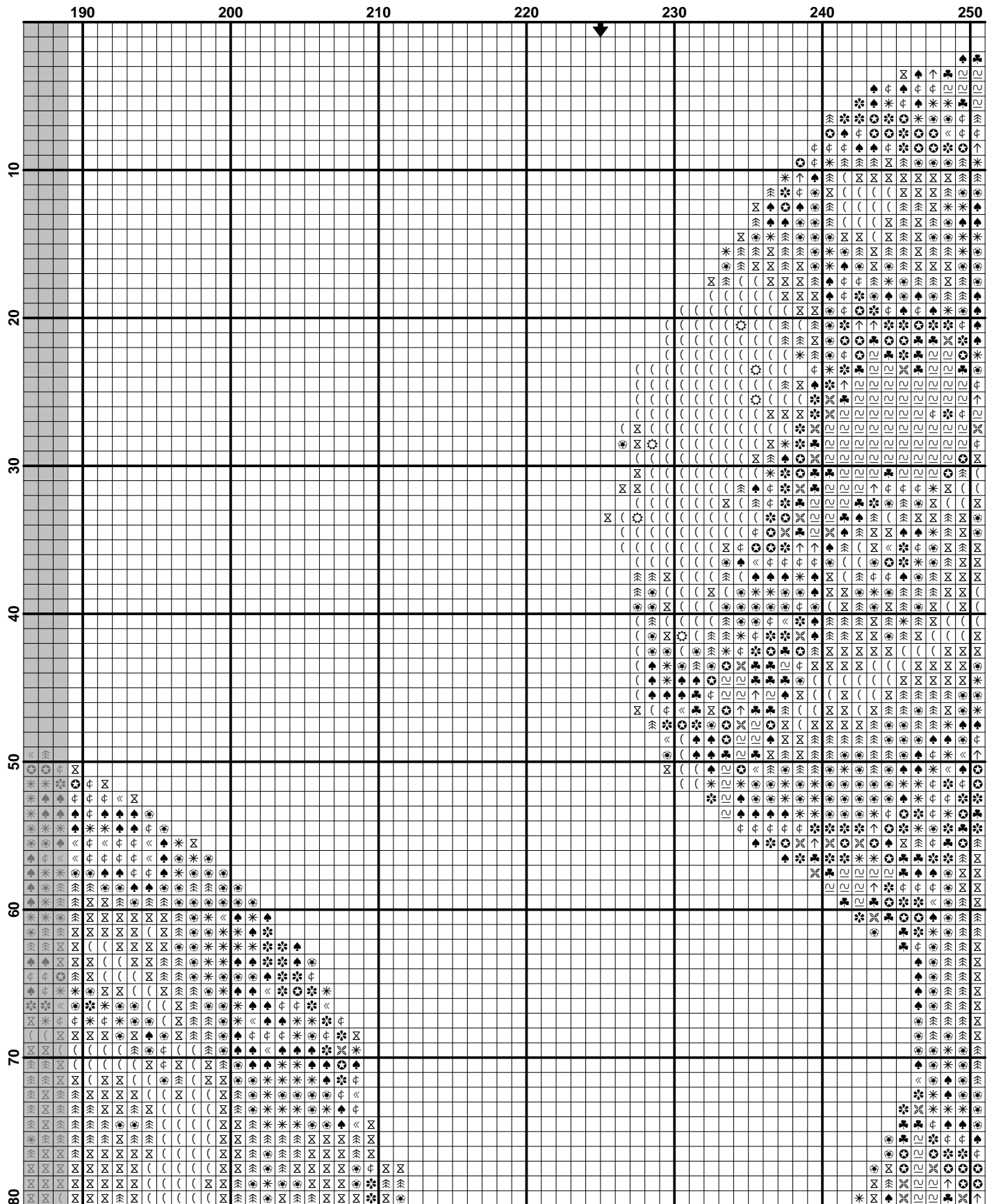
Skein Length: 313.0 in

Type	Number	Full	Half	Quarter	Petite	Back(in)	Str(in)	Spec(in)	French	Bead	Skein Est.
■ DMC	169	5363	0	0	0	0.0	0.0	0.0	0	0	2.000
■ DMC	310	10463	0	0	0	0.0	0.0	0.0	0	0	3.000
■ DMC	317	4812	0	0	0	0.0	0.0	0.0	0	0	2.000
■ DMC	318	6017	0	0	0	0.0	0.0	0.0	0	0	2.000
■ DMC	413	3036	0	0	0	0.0	0.0	0.0	0	0	1.000
■ DMC	414	5501	0	0	0	0.0	0.0	0.0	0	0	2.000
■ DMC	415	6192	0	0	0	0.0	0.0	0.0	0	0	2.000
■ DMC	535	1486	0	0	0	0.0	0.0	0.0	0	0	1.000
■ DMC	647	1527	0	0	0	0.0	0.0	0.0	0	0	1.000
■ DMC	648	3997	0	0	0	0.0	0.0	0.0	0	0	2.000
■ DMC	762	4571	0	0	0	0.0	0.0	0.0	0	0	2.000
■ DMC	3072	4531	0	0	0	0.0	0.0	0.0	0	0	2.000
■ DMC	3799	5132	0	0	0	0.0	0.0	0.0	0	0	2.000
□ DMC	3865	1796	0	0	0	0.0	0.0	0.0	0	0	1.000
□ DMC	B5200	16	0	0	0	0.0	0.0	0.0	0	0	1.000

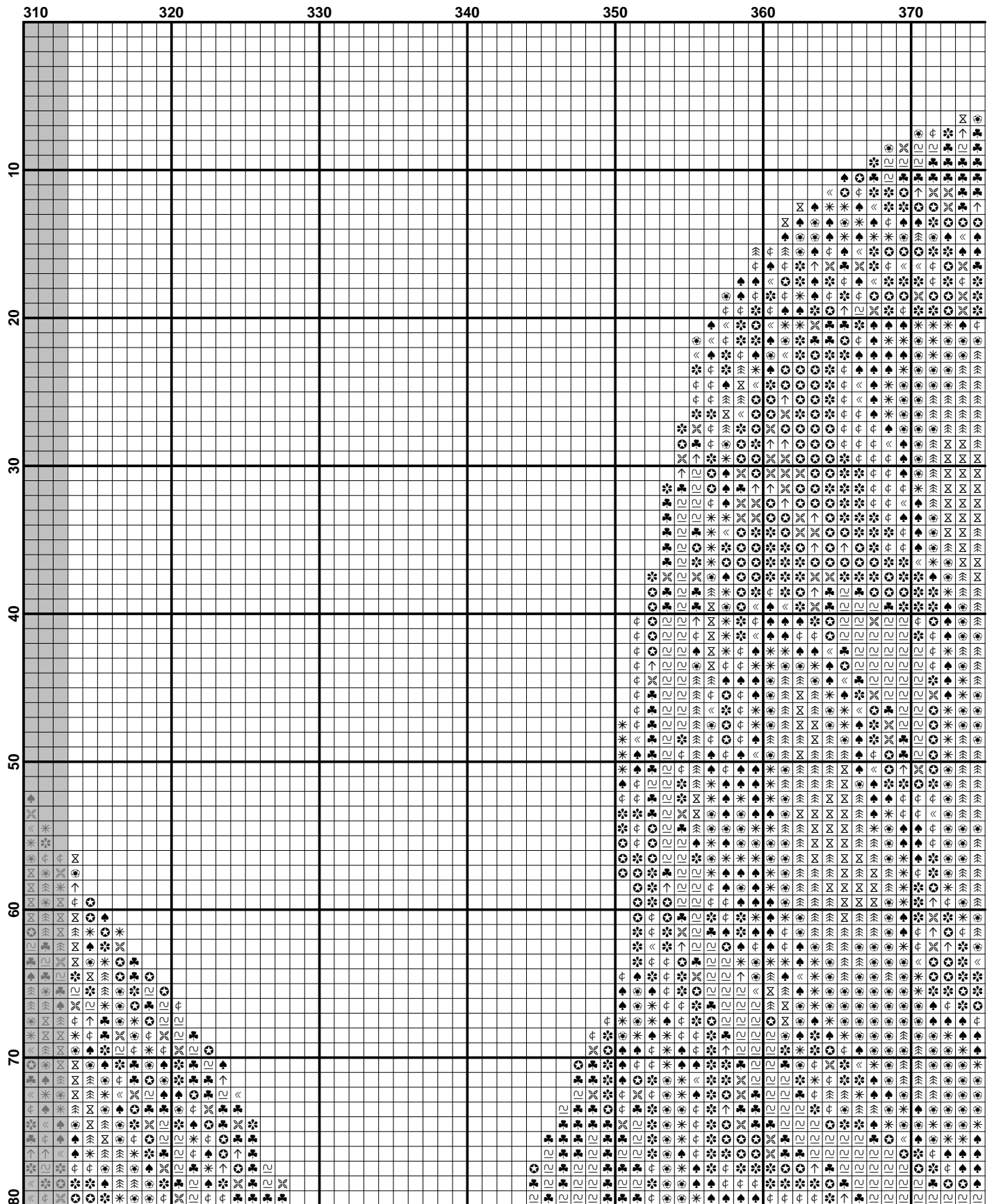


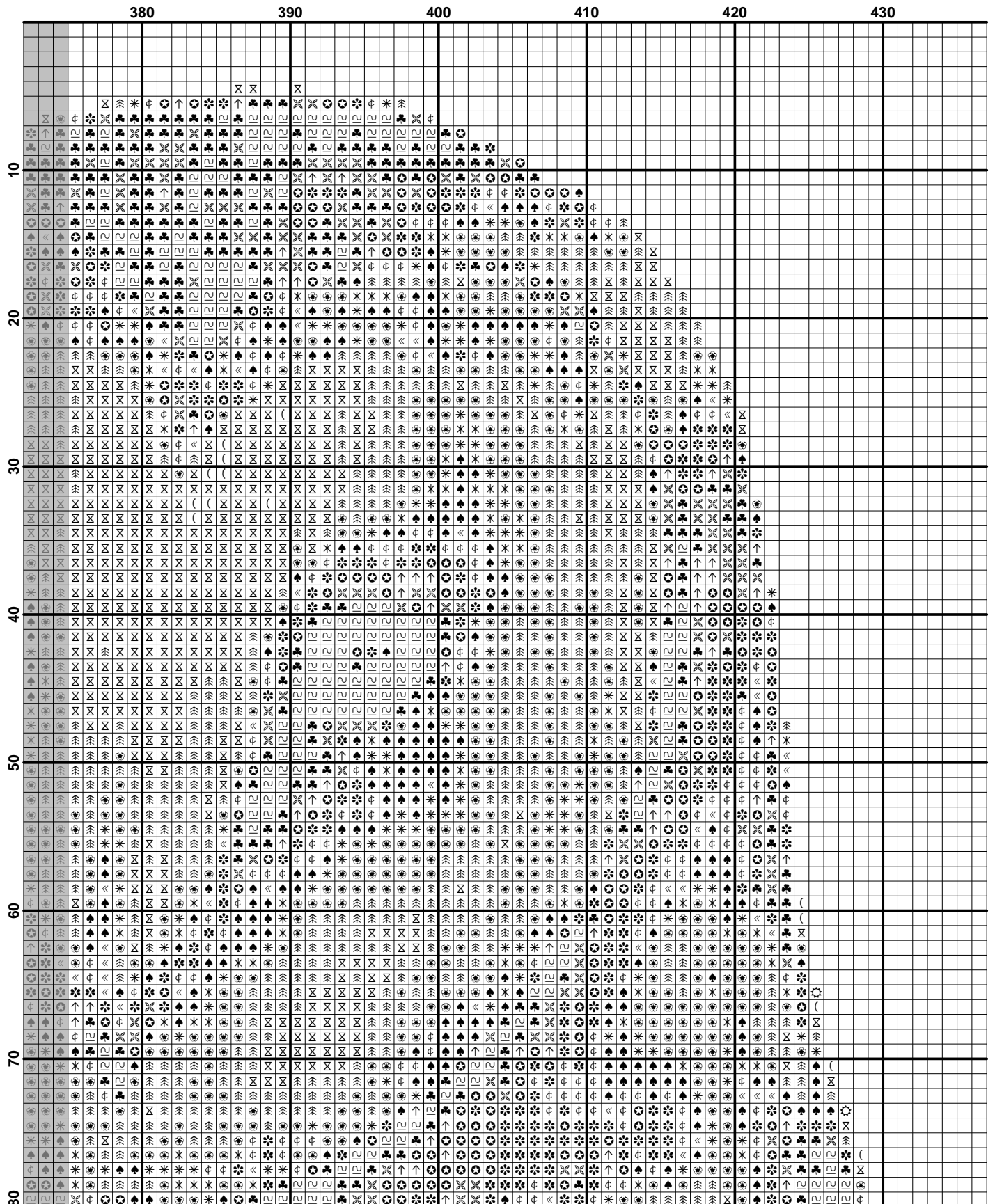


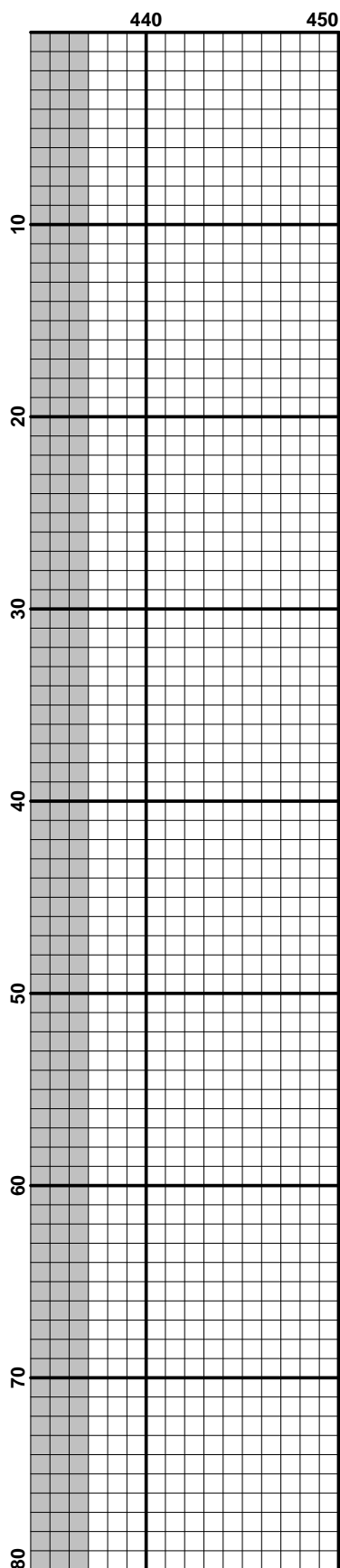


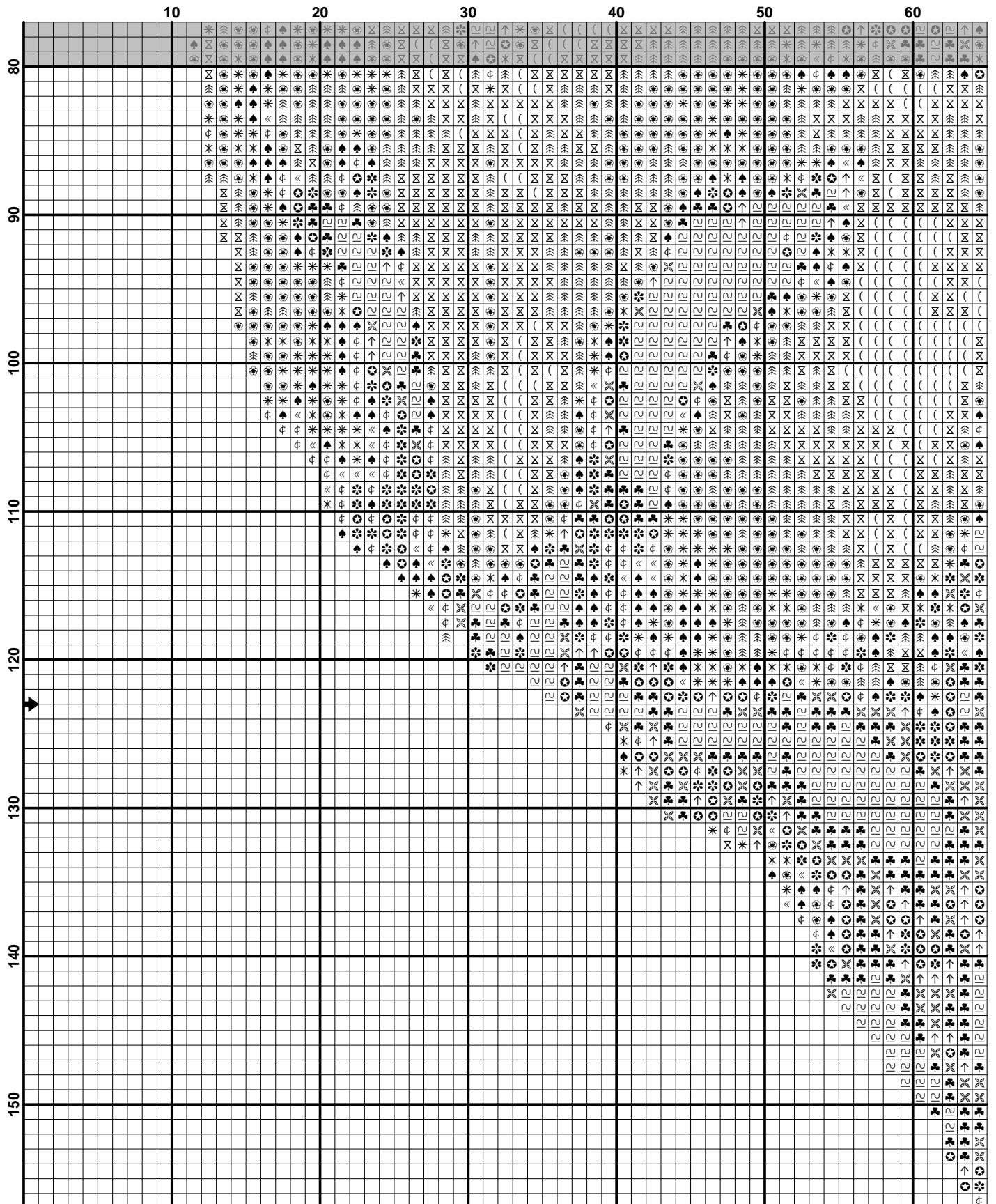


	250	260	270	280	290	300	310
10							
20							
30							
40							
50							
60							
70							
80							









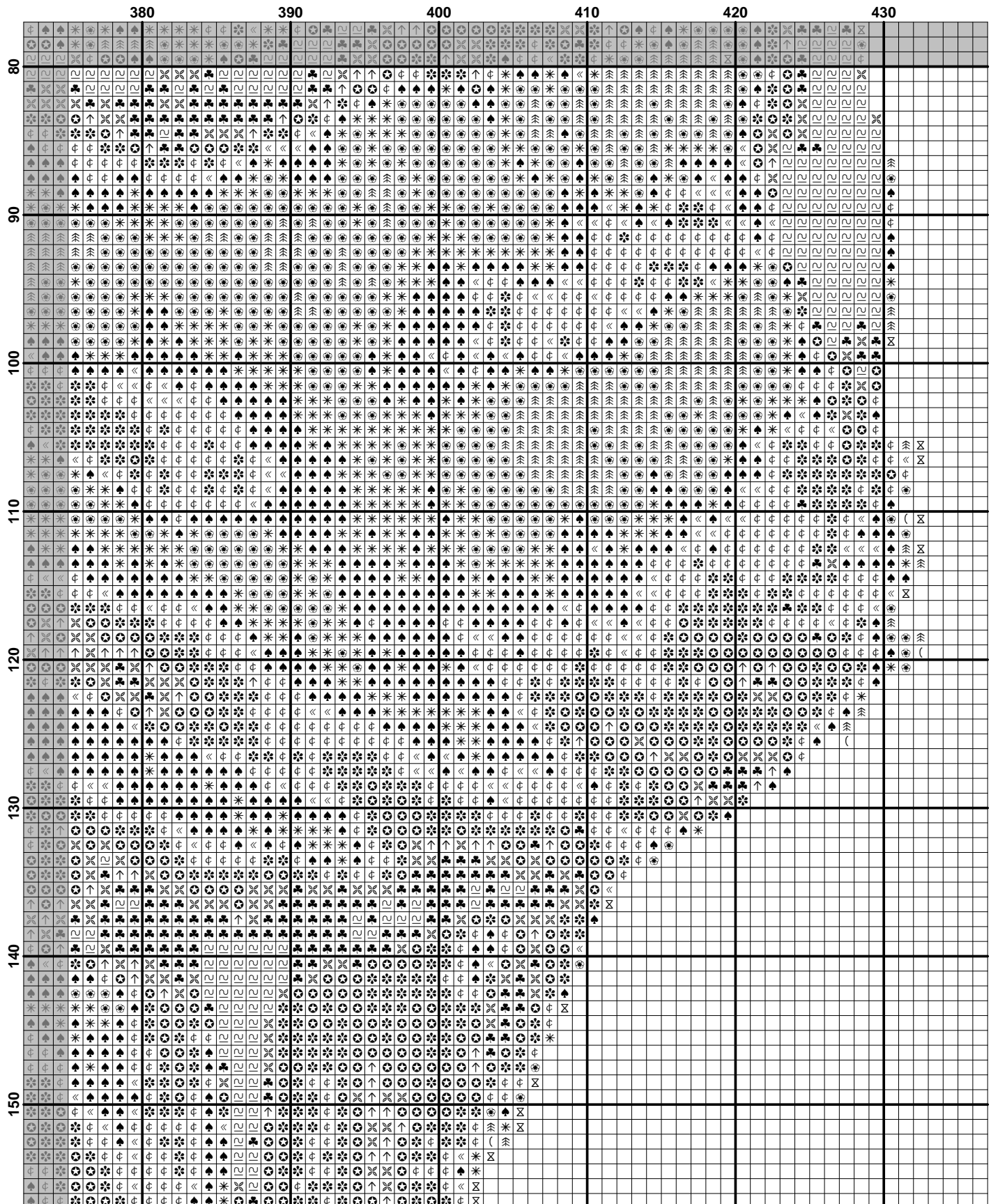
	70	80	90	100	110	120
80
90
100
110
120
130
140
150

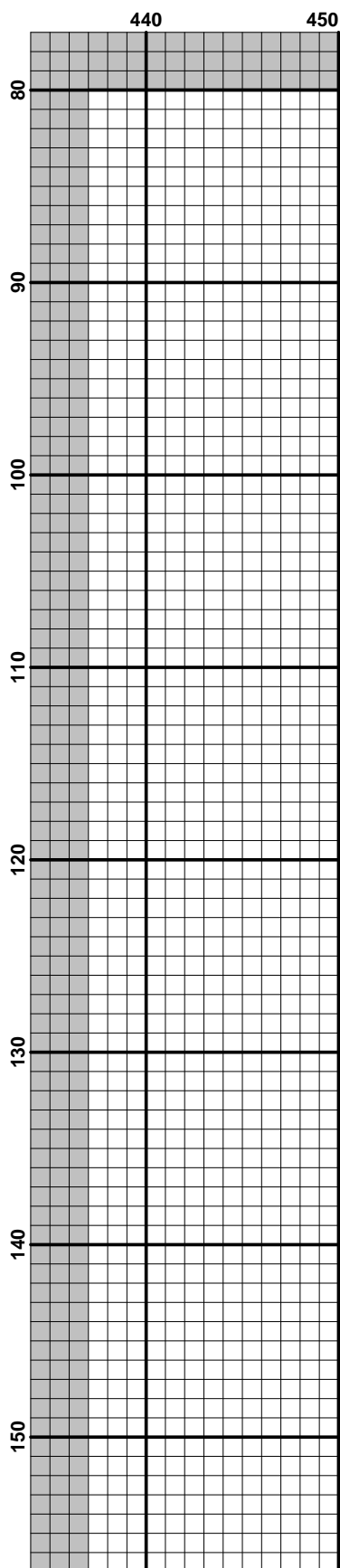
	130	140	150	160	170	180
80						
90						
100						
110						
120						
130						
140						
150						

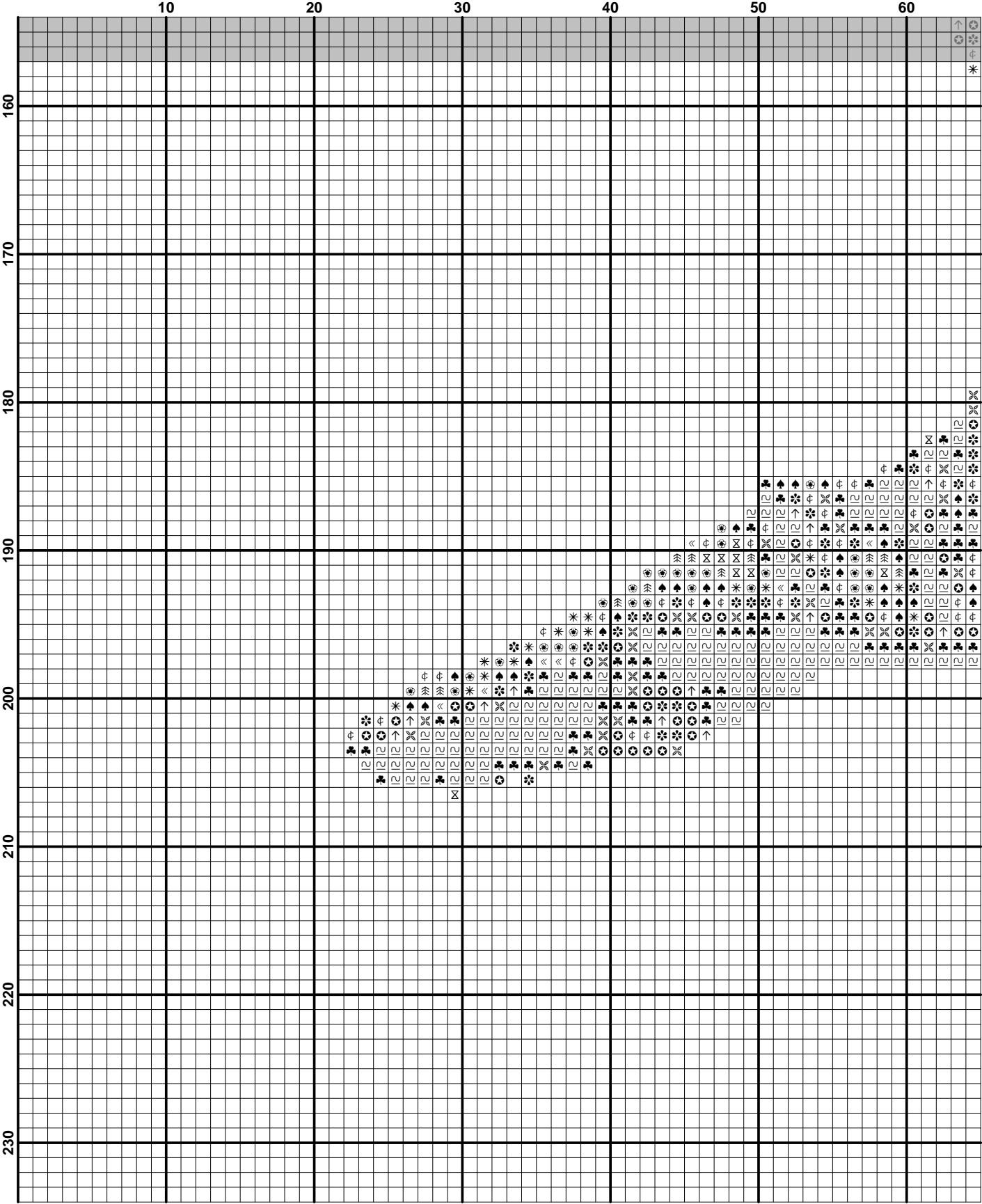
	190	200	210	220	230	240	250
80	X	X	X	X	X	X	X
81	X	X	X	X	X	X	X
82	X	X	X	X	X	X	X
83	X	X	X	X	X	X	X
84	X	X	X	X	X	X	X
85	X	X	X	X	X	X	X
86	X	X	X	X	X	X	X
87	X	X	X	X	X	X	X
88	X	X	X	X	X	X	X
89	X	X	X	X	X	X	X
90	X	X	X	X	X	X	X
91	X	X	X	X	X	X	X
92	X	X	X	X	X	X	X
93	X	X	X	X	X	X	X
94	X	X	X	X	X	X	X
95	X	X	X	X	X	X	X
96	X	X	X	X	X	X	X
97	X	X	X	X	X	X	X
98	X	X	X	X	X	X	X
99	X	X	X	X	X	X	X
100	X	X	X	X	X	X	X
101	X	X	X	X	X	X	X
102	X	X	X	X	X	X	X
103	X	X	X	X	X	X	X
104	X	X	X	X	X	X	X
105	X	X	X	X	X	X	X
106	X	X	X	X	X	X	X
107	X	X	X	X	X	X	X
108	X	X	X	X	X	X	X
109	X	X	X	X	X	X	X
110	X	X	X	X	X	X	X
111	X	X	X	X	X	X	X
112	X	X	X	X	X	X	X
113	X	X	X	X	X	X	X
114	X	X	X	X	X	X	X
115	X	X	X	X	X	X	X
116	X	X	X	X	X	X	X
117	X	X	X	X	X	X	X
118	X	X	X	X	X	X	X
119	X	X	X	X	X	X	X
120	X	X	X	X	X	X	X
121	X	X	X	X	X	X	X
122	X	X	X	X	X	X	X
123	X	X	X	X	X	X	X
124	X	X	X	X	X	X	X
125	X	X	X	X	X	X	X
126	X	X	X	X	X	X	X
127	X	X	X	X	X	X	X
128	X	X	X	X	X	X	X
129	X	X	X	X	X	X	X
130	X	X	X	X	X	X	X
131	X	X	X	X	X	X	X
132	X	X	X	X	X	X	X
133	X	X	X	X	X	X	X
134	X	X	X	X	X	X	X
135	X	X	X	X	X	X	X
136	X	X	X	X	X	X	X
137	X	X	X	X	X	X	X
138	X	X	X	X	X	X	X
139	X	X	X	X	X	X	X
140	X	X	X	X	X	X	X
141	X	X	X	X	X	X	X
142	X	X	X	X	X	X	X
143	X	X	X	X	X	X	X
144	X	X	X	X	X	X	X
145	X	X	X	X	X	X	X
146	X	X	X	X	X	X	X
147	X	X	X	X	X	X	X
148	X	X	X	X	X	X	X
149	X	X	X	X	X	X	X
150	X	X	X	X	X	X	X

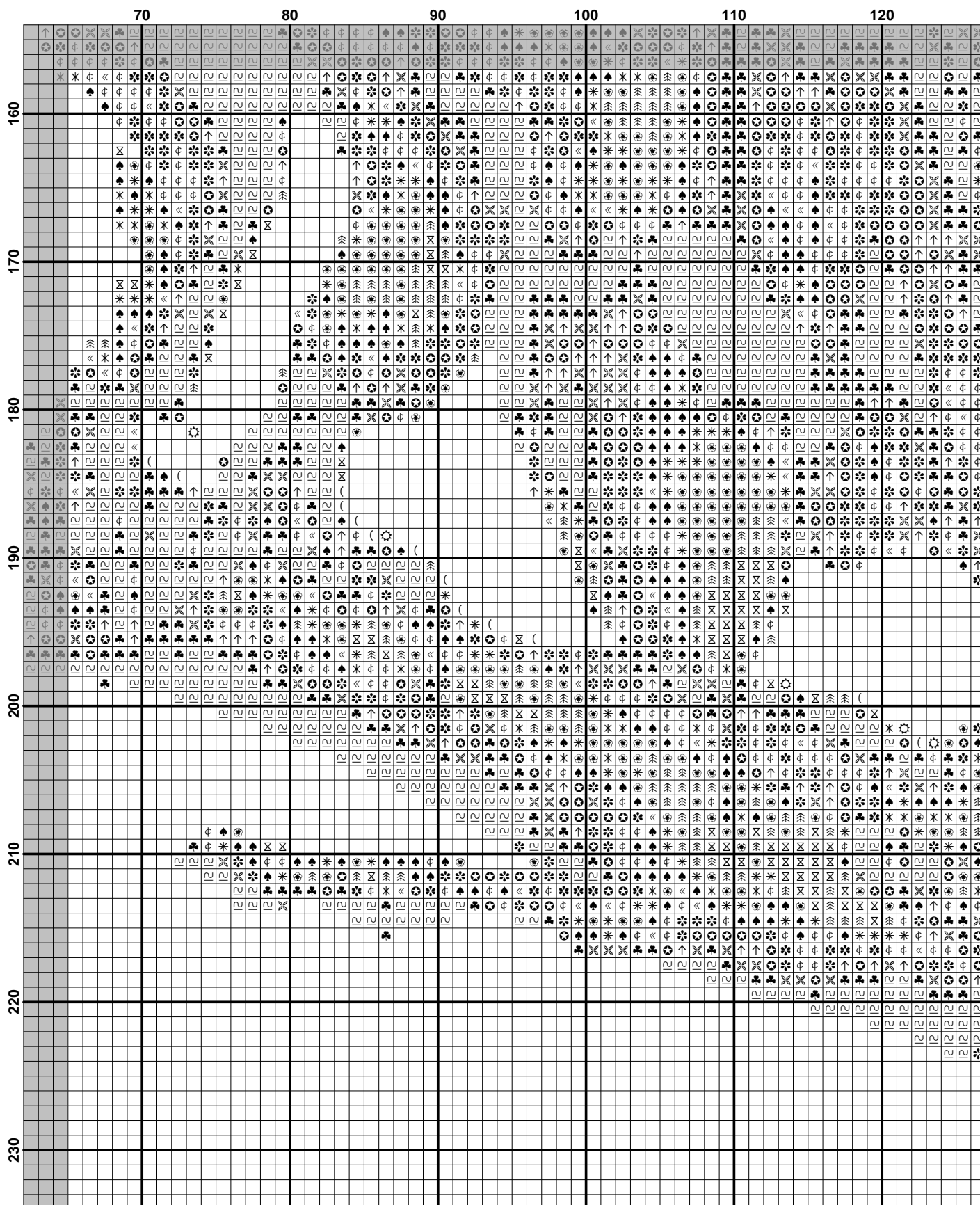
	250	260	270	280	290	300	310
80	↑	↑	↑	↑	↑	↑	↑
90	↑	↑	↑	↑	↑	↑	↑
100	↑	↑	↑	↑	↑	↑	↑
110	↑	↑	↑	↑	↑	↑	↑
120	↑	↑	↑	↑	↑	↑	↑
130	↑	↑	↑	↑	↑	↑	↑
140	↑	↑	↑	↑	↑	↑	↑
150	↑	↑	↑	↑	↑	↑	↑

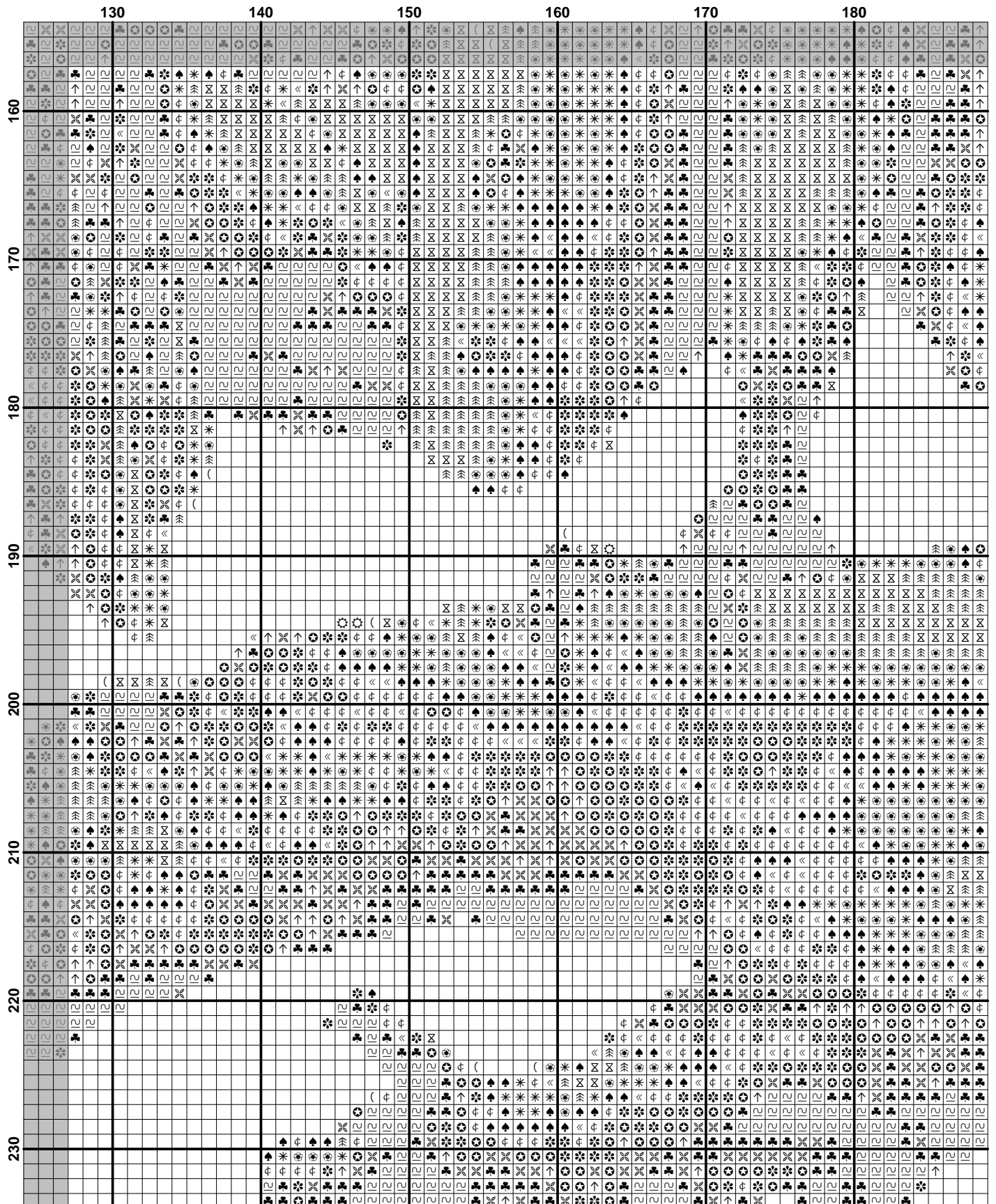
	310	320	330	340	350	360	370
80
90
100
110
120
130
140
150

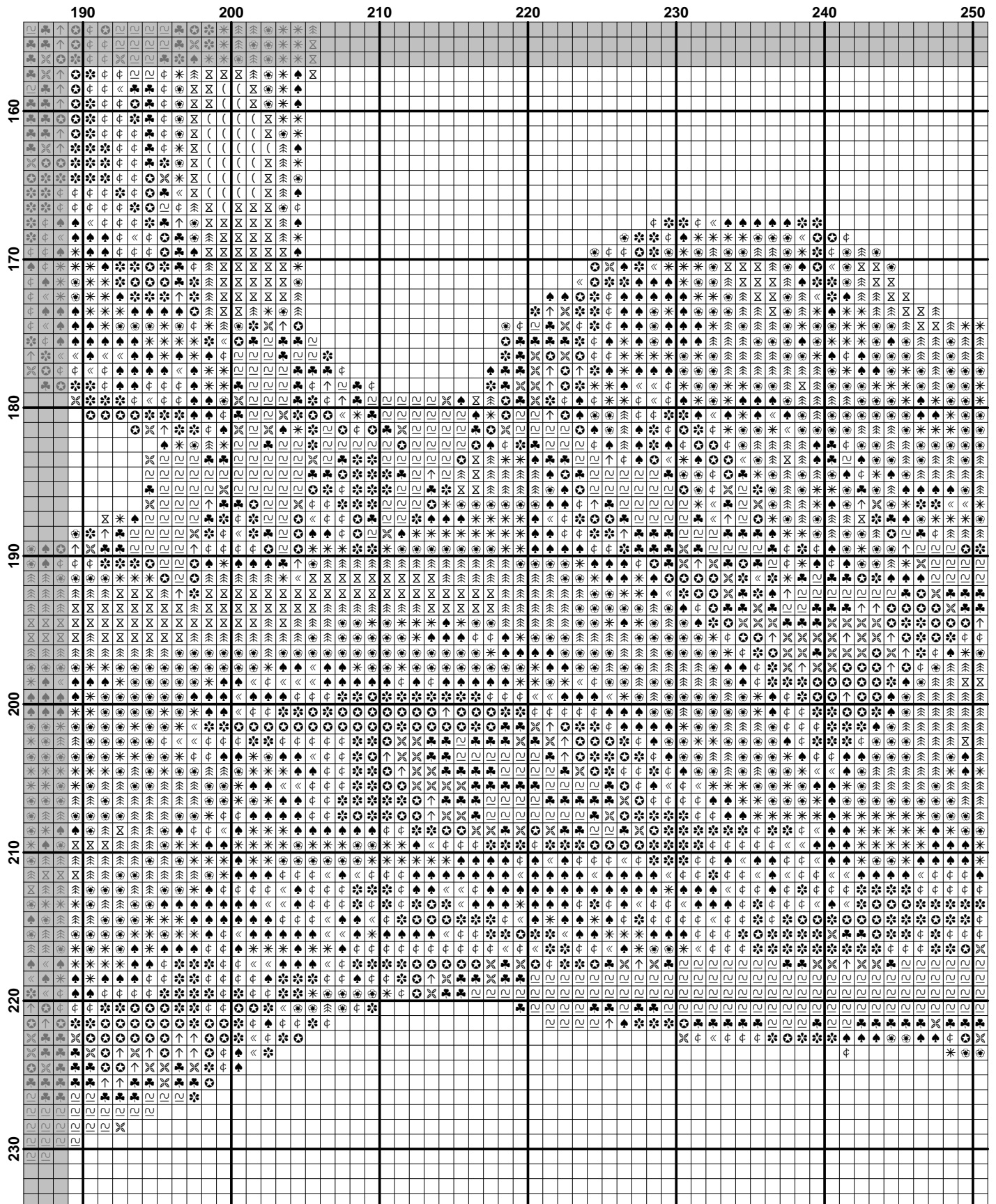






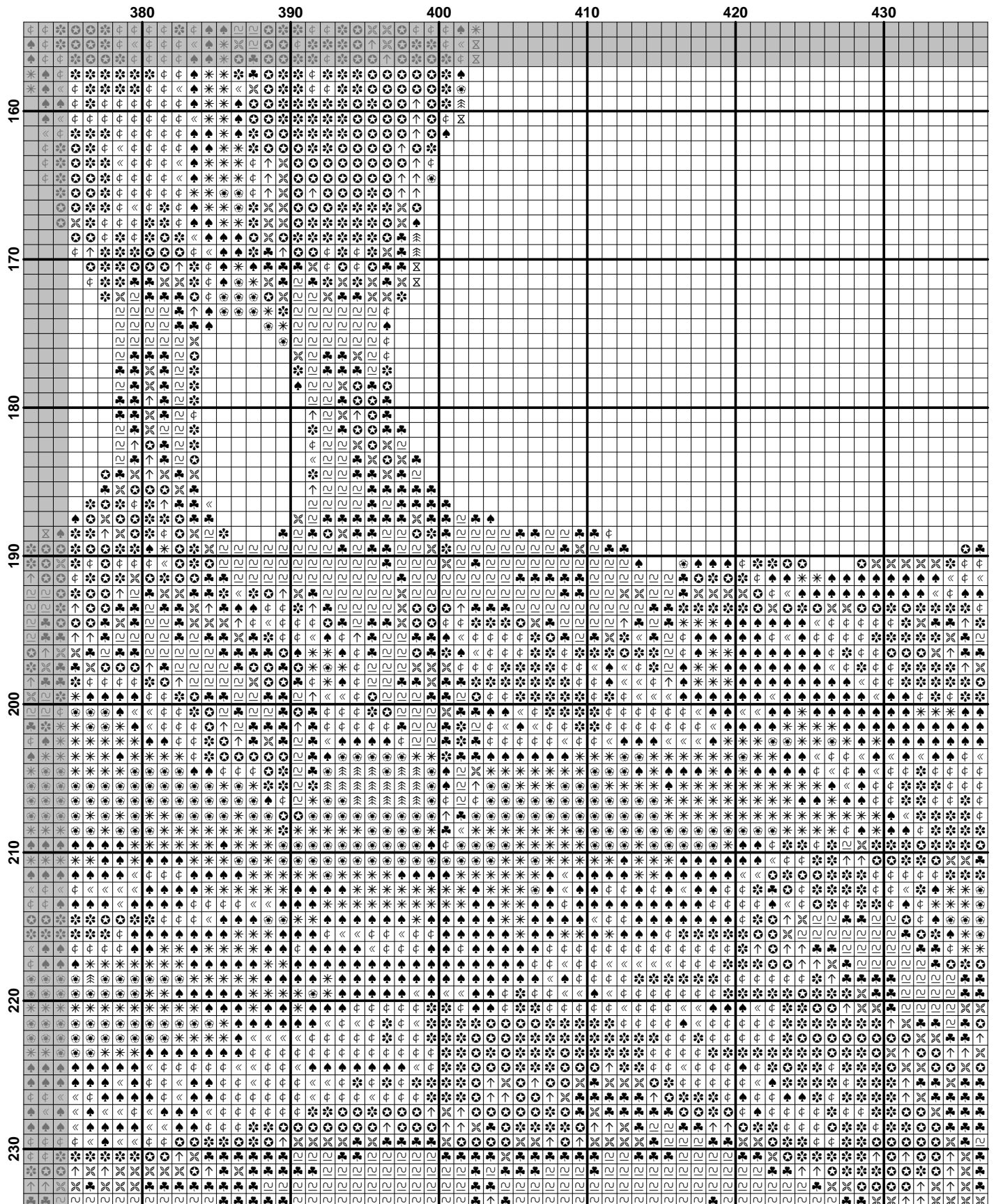


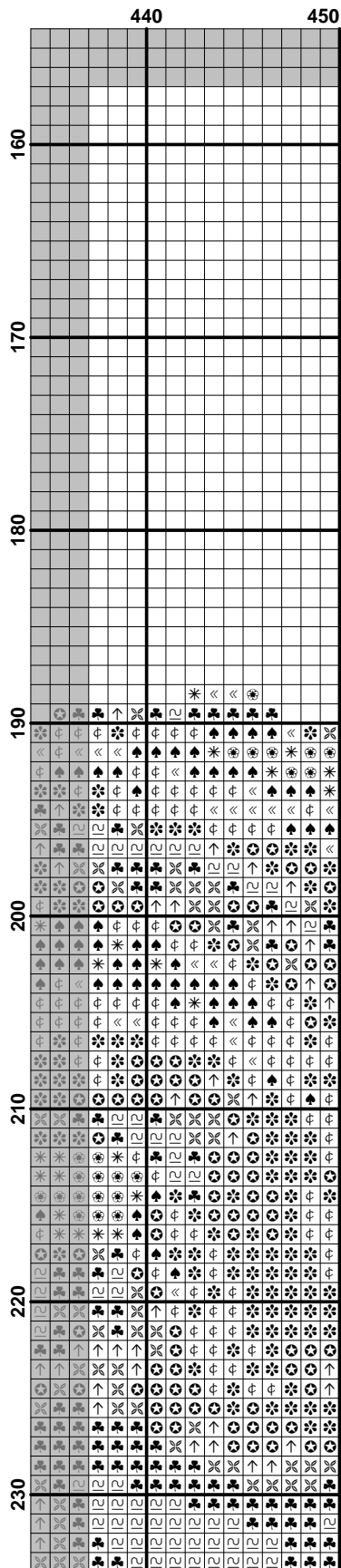


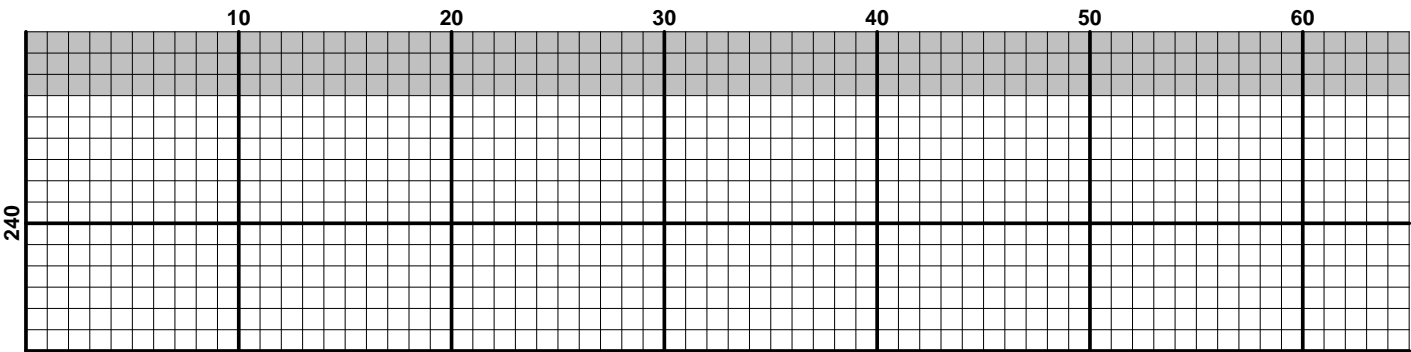


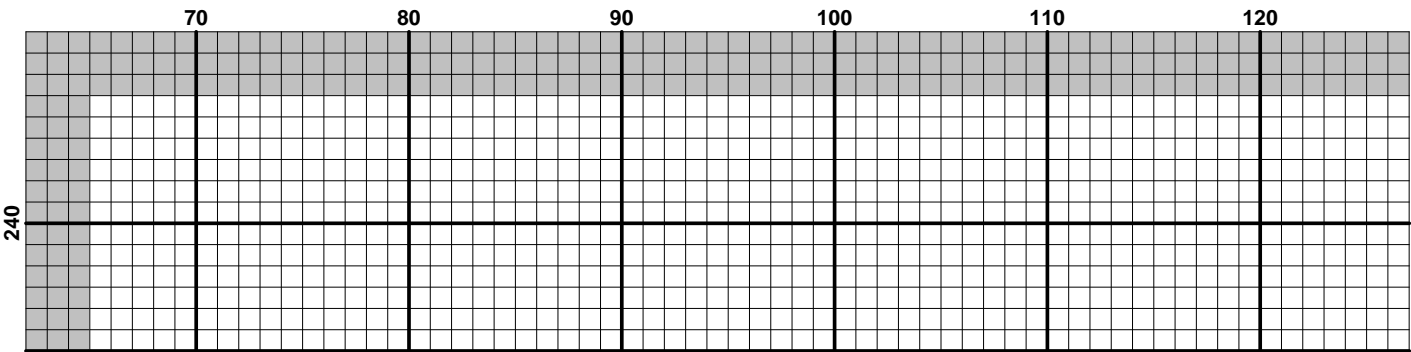
	250	260	270	280	290	300	310
160							
170							
180							
190							
200							
210							
220							
230							

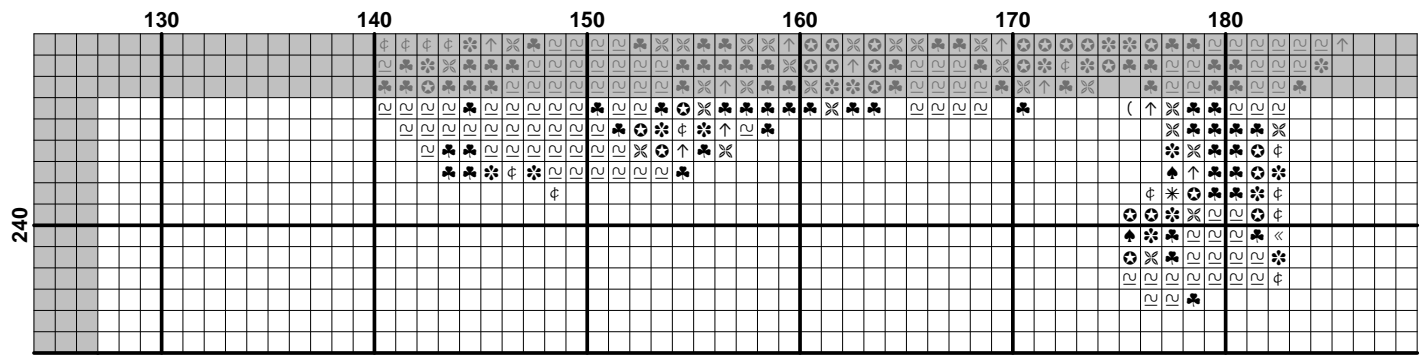
	310	320	330	340	350	360	370
160	12	12	12	12	12	12	12
170	12	12	12	12	12	12	12
180	12	12	12	12	12	12	12
190	12	12	12	12	12	12	12
200	12	12	12	12	12	12	12
210	12	12	12	12	12	12	12
220	12	12	12	12	12	12	12
230	12	12	12	12	12	12	12

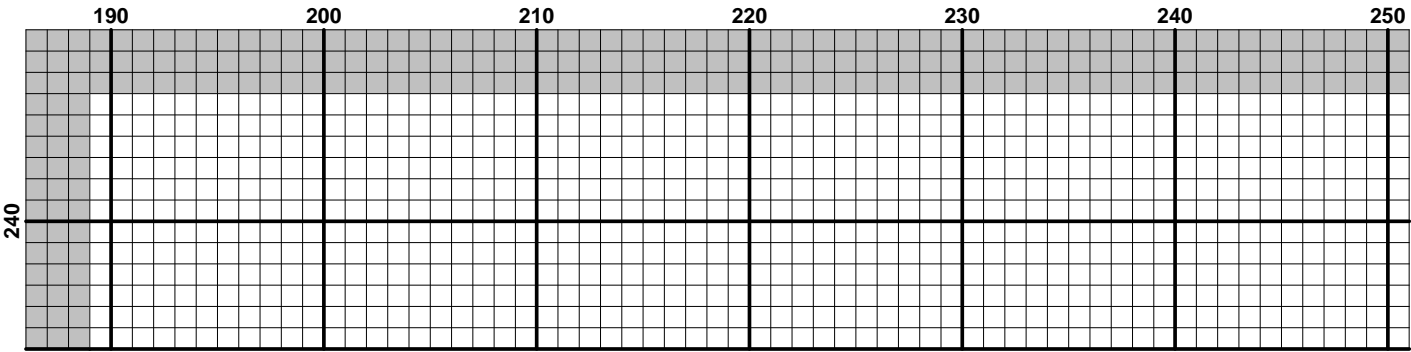


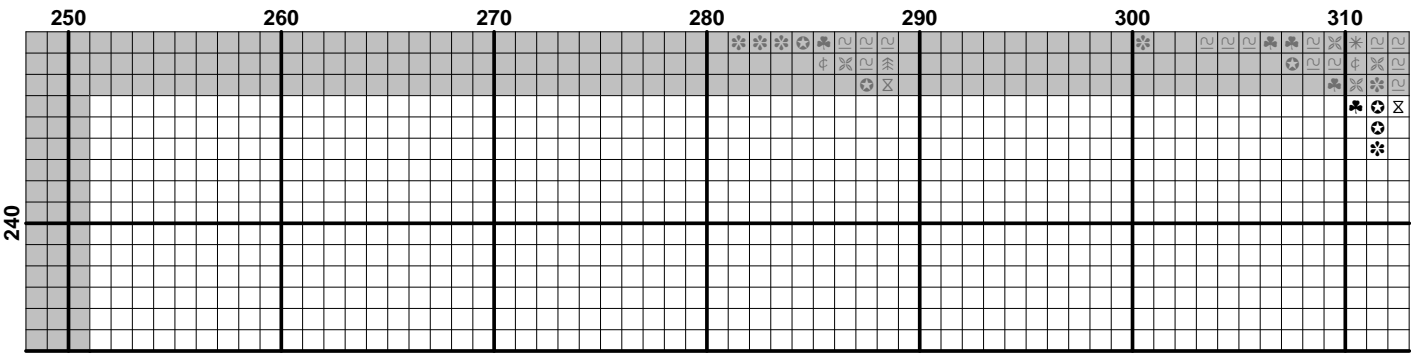


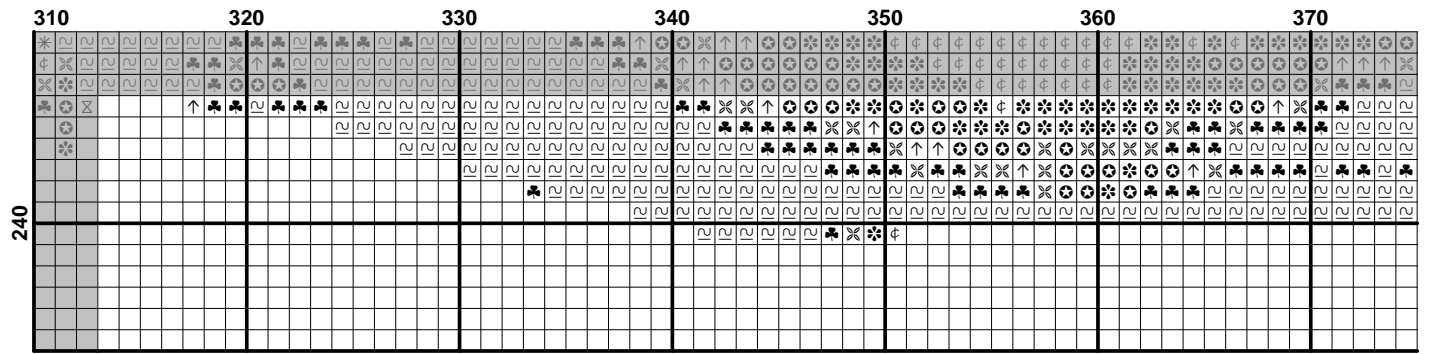












[illegible]

Figure 1 shows a 10x10 grid of playing cards. The top two rows are labeled '440' and '450'. The leftmost column is labeled '240'. The grid contains various cards including Aces, Kings, Queens, Jacks, Tens, Nines, Eights, Sevens, Sixes, Fives, and Fours of different suits (Hearts, Diamonds, Clubs, Spades).